

**IL32 Antibody (N-term)**  
**Affinity Purified Rabbit Polyclonal Antibody (Pab)**  
**Catalog # AP14500A****Specification**

---

**IL32 Antibody (N-term) - Product Information**

Application	WB, IHC-P,E
Primary Accession	<a href="#">P24001</a>
Other Accession	<a href="#">NP_001012650.1</a> , <a href="#">NP_001012649.1</a>
Reactivity	Human
Host	Rabbit
Clonality	Polyclonal
Isotype	Rabbit IgG
Calculated MW	26676
Antigen Region	24-53

**IL32 Antibody (N-term) - Additional Information****Gene ID** 9235**Other Names**

Interleukin-32, IL-32, Natural killer cells protein 4, Tumor necrosis factor alpha-inducing factor, IL32, NK4, TAIF

**Target/Specificity**

This IL32 antibody is generated from rabbits immunized with a KLH conjugated synthetic peptide between 24-53 amino acids from the N-terminal region of human IL32.

**Dilution**

WB~~1:1000

IHC-P~~1:10~50

E~~Use at an assay dependent concentration.

**Format**

Purified polyclonal antibody supplied in PBS with 0.09% (W/V) sodium azide. This antibody is purified through a protein A column, followed by peptide affinity purification.

**Storage**

Maintain refrigerated at 2-8°C for up to 2 weeks. For long term storage store at -20°C in small aliquots to prevent freeze-thaw cycles.

**Precautions**

IL32 Antibody (N-term) is for research use only and not for use in diagnostic or therapeutic procedures.

**IL32 Antibody (N-term) - Protein Information****Name** IL32

**Synonyms** NK4, TAIF

**Function** Cytokine that may play a role in innate and adaptive immune responses. It induces various cytokines such as TNFA/TNF-alpha and IL8. It activates typical cytokine signal pathways of NF-kappa-B and p38 MAPK.

**Cellular Location**

Secreted.

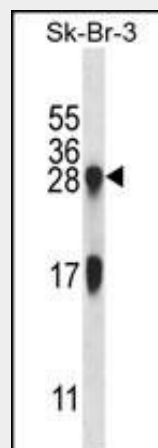
**Tissue Location**

Selectively expressed in lymphocytes. Expression is more prominent in immune cells than in non-immune cells

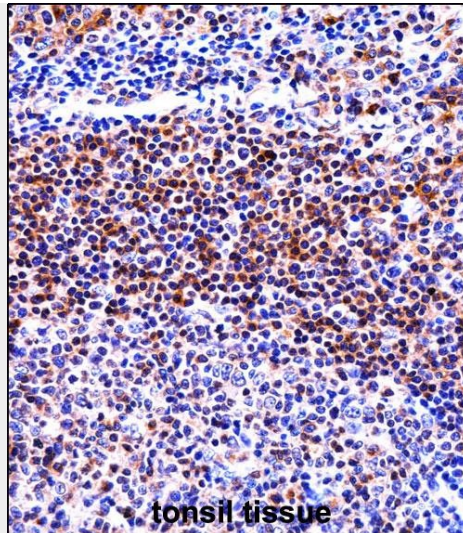
**IL32 Antibody (N-term) - Protocols**

Provided below are standard protocols that you may find useful for product applications.

- [Western Blot](#)
- [Blocking Peptides](#)
- [Dot Blot](#)
- [Immunohistochemistry](#)
- [Immunofluorescence](#)
- [Immunoprecipitation](#)
- [Flow Cytometry](#)
- [Cell Culture](#)

**IL32 Antibody (N-term) - Images**

IL32 Antibody (N-term) (Cat. #AP14500a) western blot analysis in SK-BR-3 cell line lysates (35ug/lane). This demonstrates the IL32 antibody detected the IL32 protein (arrow).



IL32 Antibody (N-term) (AP14500a) immunohistochemistry analysis in formalin fixed and paraffin embedded human tonsil tissue followed by peroxidase conjugation of the secondary antibody and DAB staining. This data demonstrates the use of IL32 Antibody (N-term) for immunohistochemistry. Clinical relevance has not been evaluated.

#### **IL32 Antibody (N-term) - Background**

This gene encodes a member of the cytokine family. The protein contains a tyrosine sulfation site, 3 potential N-myristoylation sites, multiple putative phosphorylation sites, and an RGD cell-attachment sequence. Expression of this protein is increased after the activation of T-cells by mitogens or the activation of NK cells by IL-2. This protein induces the production of TNF $\alpha$  from macrophage cells. Alternate transcriptional splice variants, encoding different isoforms, have been characterized.

#### **IL32 Antibody (N-term) - References**

Li, W., et al. J. Immunol. 185(9):5056-5065(2010)  
Cho, K.A., et al. Microb. Pathog. 49(3):95-104(2010)  
Kobori, A., et al. World J. Gastroenterol. 16(19):2355-2361(2010)  
Yue, D., et al. Asian J. Androl. 12(3):381-389(2010)  
Chae, J.I., et al. Cell. Immunol. 264(1):47-53(2010)